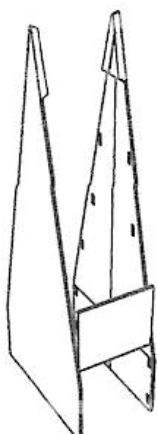


247 POP-UP STAND

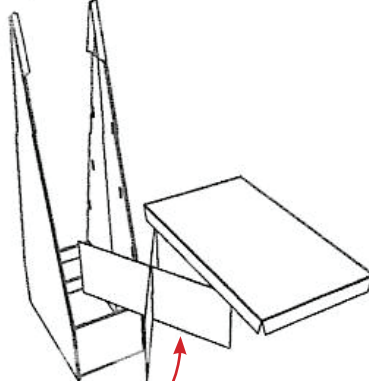
ASSEMBLY INSTRUCTIONS

STEP 1



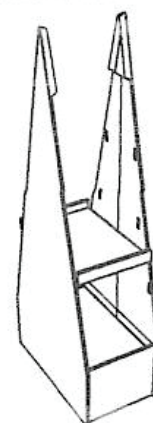
Begin by standing up side panels and slot kicker front and back into position ...

STEP 2



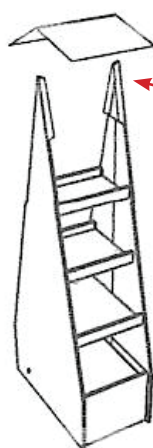
Slot the **divs** together and place into base of unit. Place the base panel on top of the divs ...

STEP 3



Slot the Larger of the shelves into position on the next set of **receivers**. Repeat for all shelves ...

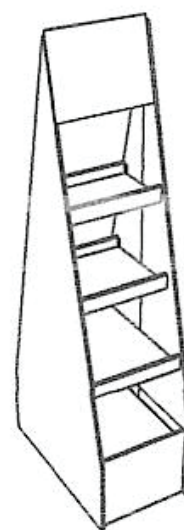
STEP 4



• double sided tape

Fold in the four flaps on the top of the unit & peel the backing from the **double sided tape**. Secure header into position then press each flap against header using both hands for a minimum of 20 seconds ...

STEP 5



Unit is now complete...